

An aerial photograph of Cologne, Germany, showing the city's dense urban landscape, green spaces, and the Rhine river in the distance. The sky is blue with scattered white clouds.

# Cologne Economic Region 2012

Statistical overview

# COLOGNE IN THE HEART OF EUROPE

## 2.192 million

people live in the CCI Cologne region. 7.733 million inhabitants make the Rhineland one of the biggest metropolis regions in Europe.

## 1 hour

16 million people can be reached from the region within one hour's driving.

## Over 6 million

people a year visit Cologne Cathedral alone. 7.5 million overnight stays are booked by guests from Germany and abroad, underlining the region's appeal and popularity.

## € 61,801

are generated per employed person in the Cologne region on average each year.

## 51 %

is the export figure for the manufacturing industry, illustrating the international orientation of the Cologne region.

## Over 12,000

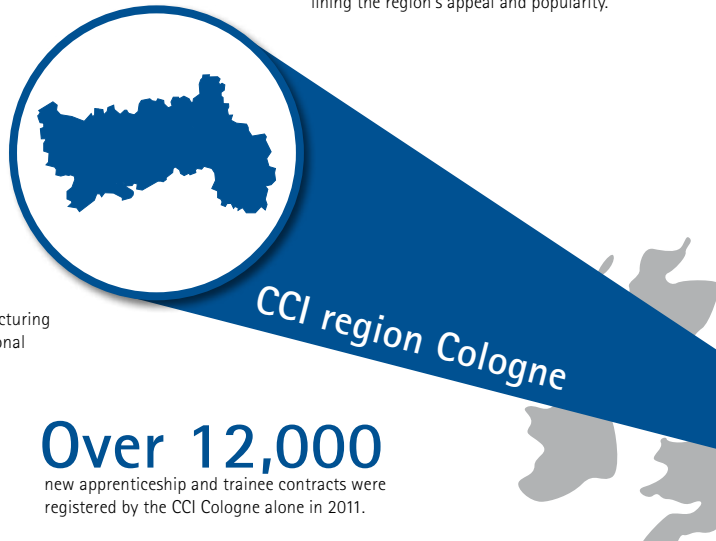
new apprenticeship and trainee contracts were registered by the CCI Cologne alone in 2011.

## Over 77,000

students at various institutes of higher education strengthen the region's potential expertise.

## With over 147,000

member companies the CCI Cologne is one of the five largest chambers of commerce and industry in Germany.

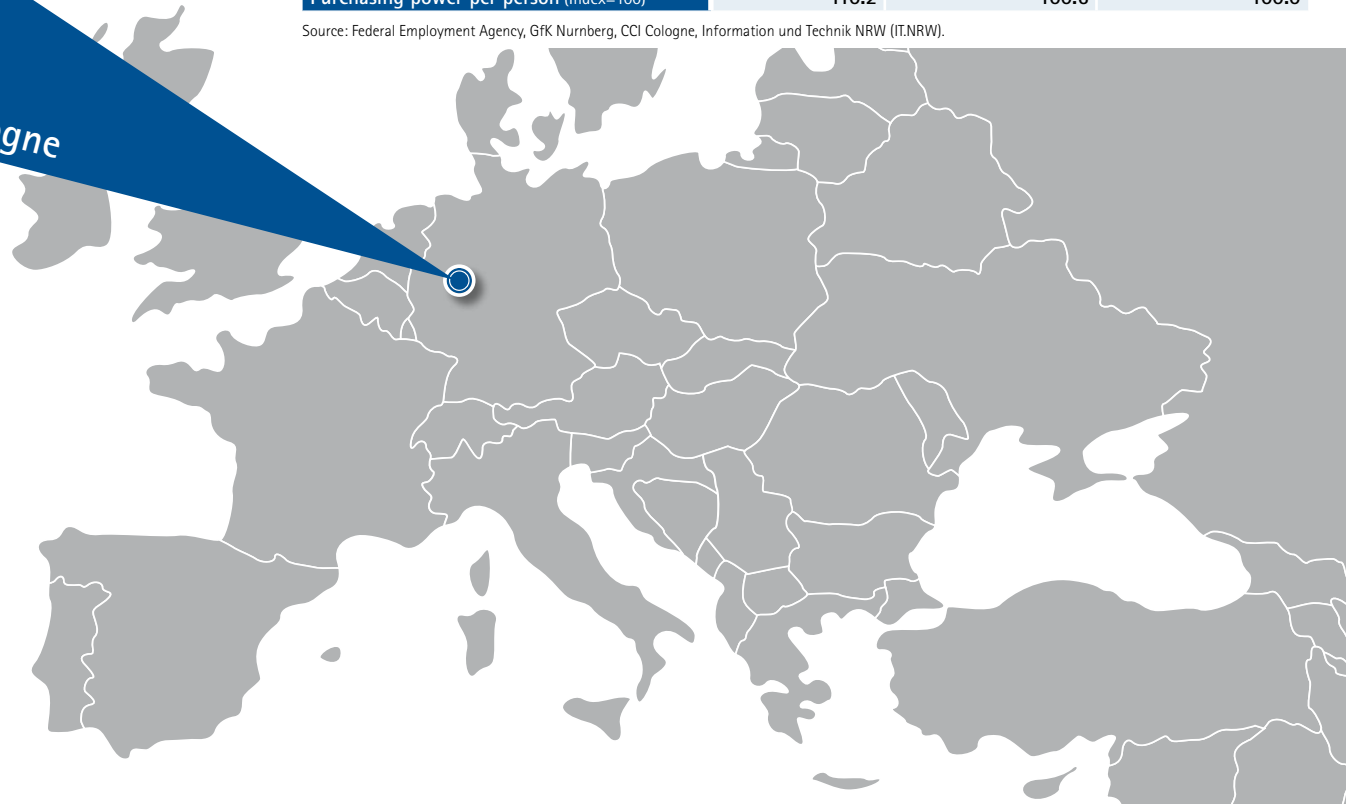


CCI region Cologne

### THE IHK REGION IN BRIEF ...

Gross domestic product	2009 in million euros <b>72,315</b>	Change on previous year (nominal) <b>-3.8 %</b>	Change in NRW <b>-4.4 %</b>
Gross domestic product per employed person	2009 in euro <b>61,801</b>	Change on previous year <b>-4.1 %</b>	Change in NRW <b>-4.3 %</b>
Population	As at 30/06/2011 <b>2,192,887</b>	Change on previous year <b>0.4 %</b>	Change in NRW <b>-0.1 %</b>
Registered companies and small traders	2011 <b>147,087</b>	Companies on the commercial register <b>37,979</b>	Change all Companies <b>1.8 %</b>
Employed persons subject to social insurance contributions	2011 <b>814,132</b>	Change on previous year <b>2.6 %</b>	Change in NRW <b>2.5 %</b>
Unemployment rate	2011 <b>8.2 %</b>	Status on previous year <b>8.7 %</b>	NRW <b>8.1 %</b>
New business registrations	2011 <b>25,094</b>	Change on previous year <b>1.8 %</b>	Change in NRW <b>-5.6 %</b>
Insolvencies	2011 <b>1,579</b>	Change on previous year <b>8.2 %</b>	Change in NRW <b>-2.7 %</b>
Purchasing power per person (Index=100)	figure for 2012 Cologne <b>110.2</b>	NRW <b>100.6</b>	Germany <b>100.0</b>

Source: Federal Employment Agency, GfK Nurnberg, CCI Cologne, Information und Technik NRW (IT.NRW).



# THE ECONOMIC REGION OF COLOGNE IN FIGURES

The cities of Cologne and Leverkusen and the three districts of Oberberg, Rhein-Berg and Rhein-Erft make up the region of the Cologne Chamber of Commerce and Industry. With its high business potential, skilled workforce and the purchasing power of its 2.2 million inhabitants, this economic region's impact extends far beyond its borders. A dense transport network of highways, railways, waterways and air routes ensures that Cologne is one of the major hubs in Europe. At the same time, business is extremely versatile here. There is a productive blend of large, medium-sized and small companies and a healthy mix of different sectors. The diversity ranges from automotive and mechanical engineering to chemicals and biotechnology, from insurance companies and trade to ICT-companies and the media.

The main data for the Cologne economic region has been compiled by CCI Cologne in this brochure. It contains the current population statistics for county boroughs and rural districts as well as a breakdown of the approx. 145,000 companies within the CCI region by figures and sectors. The brochure provides information on the development of the major industrial sectors as well as their export sales. Information on tourism, business rents and public finances, employment and training complete the spectrum.

## CONTENTS

### AREA AND POPULATION

Area and population	6
Population trend	6
Age structure	6

### EMPLOYMENT

Employees subject to social insurance contributions	7
Employees subject to social insurance contributions by sectors	7
Employment	7
Commuters	8
Development of employed persons subject to social insurance contributions in the CCI Cologne region	8

### ECONOMIC PERFORMANCE

Gross domestic product and gross added value	9
GfK purchasing power and POS sales	9
Business situation and expectations, spring 2012	9
Business climate indicators	10

### TRANSPORT

Passenger and freight volume at Köln Bonn Airport	10
Cargo handling in the ports	10

### COMPANIES

The largest companies in the CCI Cologne region	11
Branch structure of companies registered with the CCI	11
Registered companies and small traders	12
Company registrations and insolvencies	12

### MANUFACTURING INDUSTRY

Manufacturing industry	13
Selected industry sectors	13
Export sales	14

### TRADE

Retail trade companies	14
Wholesale companies	15

### HEALTH

Health services	15
-----------------	----

### TOURISM

Overnight stays	16
Tourism and leisure industry	16
Trade fairs and exhibitions	17

### INFORMATION AND COMMUNICATION

ICT-companies	17
---------------	----

### BUILDING AND LIVING

Planning permissions	17
Commercial rental prices	18

### PUBLIC FINANCES

Public finances	19
Business rates	19

### VOCATIONAL TRAINING

Distribution of newly registered apprenticeships in key occupations	20
Registered Apprenticeships from 2000 to 2011	21
Careers advice	21
Training and further training	22

Publisher	23
Adresses	24

## AREA AND POPULATION IN THE CHAMBERG'S REGION

Area and population					
Administrative district	Area		Population		
	sq.km	Share in %	Absolute	Share in %	population per sq.km
Cologne	405.17	15.9	1,010,269	46.1	2,493.50
Leverkusen	78.87	3.1	160,901	7.3	2,040.10
Oberberg District	918.56	36.1	280,326	12.8	305.20
Rhein-Erft District	704.60	27.7	464,836	21.2	659.70
Rhein-Berg District	437.53	17.2	276,555	12.6	632.10
<b>CCI Cologne region</b>	<b>2,544.73</b>	<b>100.0</b>	<b>2,192,887</b>	<b>100.0</b>	<b>861.70</b>
NRW	34,092.26		17,836,512		523.70

Source: Information und Technik NRW (IT.NRW). Status: 30/06/2011.

## Population trend

Administrative district	Natural Population trend			Migration		
	Births	Deaths	Balance	Inward migr.	Outward migr.	Balance
Cologne	10,361	9,447	914	57,808	49,748	8,060
Leverkusen	1,335	1,682	-347	6,617	6,101	516
Oberberg District	2,349	2,994	-645	12,546	13,693	-1,147
Rhein-Erft District	3,799	4,656	-857	26,497	25,536	961
Rhein-Berg District	2,149	2,815	-666	13,731	13,350	381
<b>CCI Cologne region</b>	<b>19,993</b>	<b>21,594</b>	<b>-1,601</b>	<b>117,199</b>	<b>108,428</b>	<b>8,771</b>
NRW	147,333	192,137	-44,804	816,030	798,706	17,324

Source: Information und Technik NRW (IT.NRW). Status: 2010.

## Age structure

Administrative district	Age from... to under... years							
	under 6	6 - 15	15 - 18	18 - 25	25 - 45	45 - 65	65 a. over	total
Cologne	55,989	76,572	25,490	86,602	319,674	259,393	183,399	1,007,119
Leverkusen	8,312	13,848	4,829	12,522	40,891	44,353	36,017	160,772
Oberberg District	14,396	27,456	10,449	23,958	68,946	79,361	56,274	280,840
Rhein-Erft District	23,720	41,621	14,615	36,477	118,218	137,124	92,355	464,130
Rhein-Berg District	14,032	26,299	9,516	20,501	64,014	81,070	61,495	276,927
<b>CCI Cologne region</b>	<b>116,449</b>	<b>185,796</b>	<b>64,899</b>	<b>180,060</b>	<b>611,743</b>	<b>601,301</b>	<b>429,540</b>	<b>2,189,788</b>
NRW	900,214	1,574,815	579,781	1,502,750	4,612,964	5,057,288	3,617,342	17,845,154

Source: Information und Technik NRW (IT.NRW). Status: 2010.

## EMPLOYMENT IN THE CCI COLOGNE REGION

Employed persons subject to social insurance contributions		
Economic sectors	2011	2010
Agriculture and forestry; fisheries	1,788	1,792
Manufacturing industry	195,795	194,644
of which: manufacturing sector	141,239	140,228
construction sector	36,374	36,218
Trade	123,377	121,280
Hospitality sector	24,466	23,833
Transport and warehousing	44,694	42,902
Other services	423,994	408,997
of which: information and communication	45,408	43,511
Financial and insurance services	47,486	48,439
Real estate and housing	6,394	6,092
Provision of other public and private sector services	324,706	310,955
<b>Total</b>	<b>814,132</b>	<b>793,492</b>
NRW	5,963,603	5,820,035

Source: Information und Technik NRW (IT.NRW). Status: 30/06/2011 / 30/06/2010.

## Employed persons subject to social insurance contributions by sectors

Administrative district	Agriculture and forestry, fisheries	Manufacturing business	Service
Cologne	0.0 %	17.2 %	82.8 %
Leverkusen	0.1 %	34.0 %	65.9 %
Oberberg District	0.4 %	43.1 %	56.5 %
Rhein-Erft District	0.8 %	28.7 %	70.6 %
Rhein-Berg District	0.4 %	30.1 %	69.5 %
<b>CCI Cologne region</b>	<b>0.2 %</b>	<b>24.1 %</b>	<b>75.8 %</b>
NRW	0.5 %	29.5 %	70.0 %

Source: Information und Technik NRW (IT.NRW). Status: 30/06/2011.

## Employment\*

Administrative district	Unemployed	Rate**
Cologne	49,564	9.6
Leverkusen	6,257	7.7
Oberberg District	8,902	6.2
Rhein-Erft District	17,953	7.7
Rhein-Berg District	8,706	6.2
<b>CCI Cologne region</b>	<b>91,382</b>	<b>8.2</b>
NRW	728,640	8.1

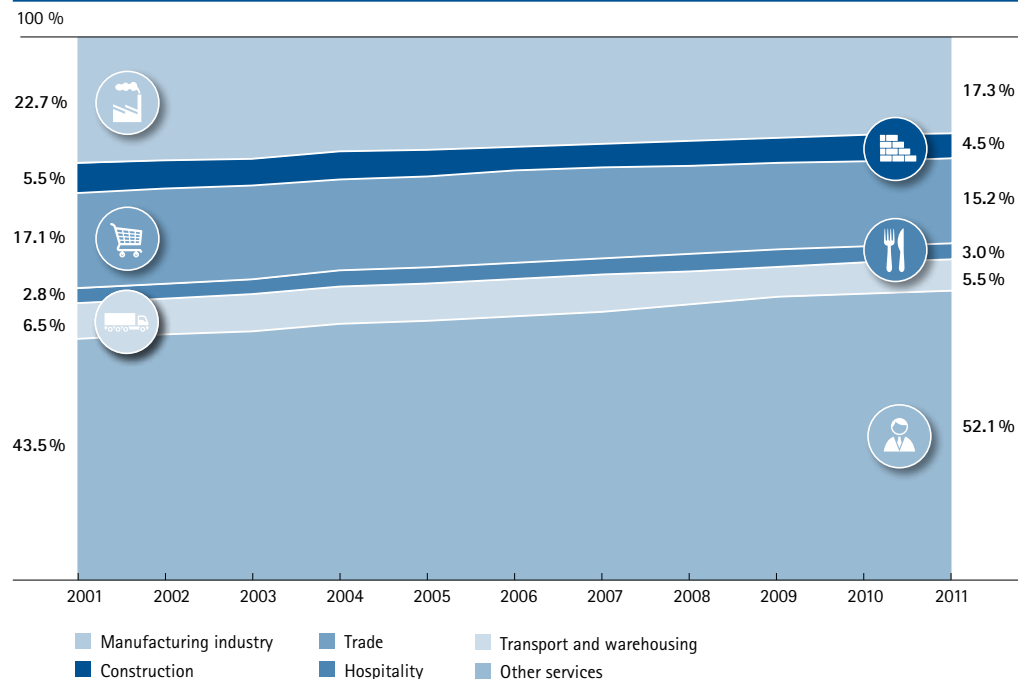
\* Annual average values \*\*Unemployment rate as a percentage of all non-public sector employable persons. Source: Federal Agency for Employment. Status: 2011.

## Commuters

Administrative district	Incoming commuters	Outward commuters	Commuter Balance
Cologne	228,993	100,626	128,367
Leverkusen	32,948	27,974	4,974
Oberberg District	22,939	29,438	-6,499
Rhein-Erft District	54,095	88,055	-33,960
Rhein-Berg District	31,488	57,167	-25,679
<b>CCI Cologne region</b>	<b>370,463</b>	<b>303,260</b>	<b>67,203</b>

Balance incoming - outgoing commuters. Source: Federal Agency for Employment. Status: 30/06/2011. Provisional figures.

## DEVELOPMENT OF EMPLOYED PERSONS SUBJECT TO SOCIAL INSURANCE CONTRIBUTIONS IN THE CCI COLOGNE REGION



Source: CCI Cologne. Status: 30.06., without agriculture and forestry and the energy sector. Due to the new classification of economic activity only limited comparisons can be made up to 2007 and after 2008.

## ECONOMIC PERFORMANCE IN THE CCI COLOGNE REGION

### Gross domestic product and gross value added (GVA) by economic sectors

Administrative district	Gross domestic product at market prices (in million euros)			GVA according to economic sector 2008 (in million euros)				
	2009	2008	Change in %	Manufacturing industry	Services sectors total	Trade, hospitality and transport	Financing, leasing, company service providers	GDP per employed person (in euros)
Cologne	41,761	42,672	-2.1	6,052	31,207	7,259	14,156	62,433
Leverkusen	5,584	6,196	-9.9	2,133	2,846	798	1,131	69,125
Oberberg District	7,263	7,897	-8.0	2,441	4,006	745	1,870	55,750
Rhein-Erft District	12,144	12,670	-4.1	3,187	7,600	2,560	2,762	66,432
Rhein-Berg District	5,563	5,724	-2.8	960	3,974	812	1,700	51,812
<b>CCI Cologne region</b>	<b>72,315</b>	<b>75,159</b>	<b>-3.8</b>	<b>14,773</b>	<b>49,633</b>	<b>12,174</b>	<b>21,620</b>	<b>61,801</b>
NRW	522,920	546,988	-4.4	122,957	341,595	84,258	143,428	60,244
Germany	2,397,100	2,481,200	-3.4	566,520	1,556,780	373,650	666,690	59,524

Source: Information und Technik NRW (IT.NRW). Status: August 2010.

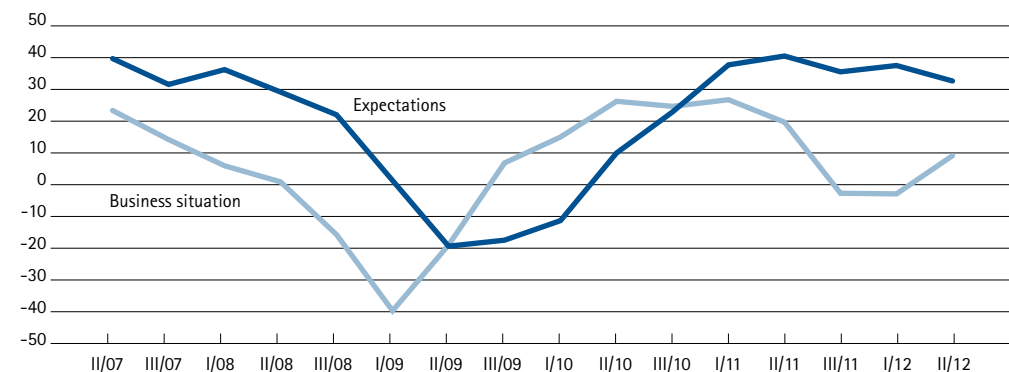
### Purchasing power according to GfK and POS sales

Administrative district	Purchasing power 2012		POS sales 2012	
	Million euros	Index (D=100)	Million euros	Index (D=100)
Cologne	22,220	110.2	6,903	136.6
Leverkusen	3,434	106.7	940	116.0
Oberberg District	5,470	97.3	1,266	89.9
Rhein-Erft District	10,114	108.9	1,952	83.8
Rhein-Berg District	6,702	120.9	1,395	100.4
NRW	359,267	100.6	93,046	103.9
Germany	1,636,200	100.0	410,100	100.0

Source: GfK Nürnberg. Status: 2011.

Purchasing power: Sum of all net incomes per region; POS sales (point of sale - formerly retail sales): Retail sales per region, refer to [www.ihk-koeln.de](http://www.ihk-koeln.de), section: Standortpolitik/Zahlen, Daten und Statistiken.

## BUSINESS SITUATION AND EXPECTATIONS, SPRING 2012



Source: CCI Cologne, business cycle survey for spring 2012. Cf. [www.ihk-koeln.de](http://www.ihk-koeln.de) under Standortpolitik/Konjunktur (regional economic policy/economy).

## Business climate indicators

	Situation			Expectations		
	Good	Poor	Situation indicator	Better	Poorer	Expectation indicator
Spring 2007	47.8	8.2	39.6	31.2	8.1	23.2
Autumn 2007	42.1	10.7	31.4	26.8	12.9	14.0
Beginning of 2008	45.2	9.1	36.1	21.2	15.5	5.7
Spring 2008	39.0	10.0	29.0	16.4	15.8	0.6
Autumn 2008	36.0	14.2	21.8	15.9	32.0	-16.1
Beginning of 2009	26.0	25.0	1.0	10.6	50.8	-40.2
Spring 2009	15.8	35.6	-19.8	13.4	32.7	-19.4
Autumn 2009	16.3	34.3	-17.9	29.4	22.8	6.6
Beginning of 2010	18.4	30.2	-11.7	28.9	14.1	14.8
Spring 2010	24.8	15.1	9.7	34.3	8.2	26.1
Autumn 2010	33.2	10.5	22.7	33.3	8.8	24.5
Beginning of 2011	44.4	6.8	37.6	35.1	8.5	26.6
Spring 2011	46.1	5.6	40.4	26.8	7.3	19.5
Autumn 2011	44.7	9.3	35.4	18.4	21.4	-3.0
Beginning of 2012	45.9	8.4	37.4	17.2	20.4	-3.2
Spring 2012	41.2	8.7	32.5	22.5	13.6	8.9

The business climate indicators are deduced from the balance of relative shares of the affirmative and negative answers of companies within the context of the business cycle survey conducted by the CCI Cologne. The indicator values can lie between minus 100 and plus 100 percentage points. A positive indicator value means that the share of affirmative answers is greater than the share of negatives. With a value below zero the proportional share of negative answers predominates. We also draw your attention to our detailed business cycle reports on the Internet at: [www.ihk-koeln.de](http://www.ihk-koeln.de) section: Standortpolitik/Konjunkturbericht  
Source: CCI Cologne. Status: Mai 2012.

## TRANSPORT

## Passenger and freight volumes at Köln Bonn Airport

Volume	2011	2010	Change in %
Air passengers	9,625,483	9,851,692	-2
Freight (in tonnes)	742,347	656,111	13

Source: Cologne Bonn Airport. Status: 2011.

## Cargo handling at ports (in 1,000 tons)

Ports	2011	2010	Change in %
Cologne (incl. Container)	*	12,648	
Wesseling/SDO	*	1,916	
Leverkusen/Chemion	2256	2288	-1.4

Source: City of Cologne, SDO Wesseling, Bayer Leverkusen. \* Value not available at time of printing. Status: 2011.

## COMPANIES IN THE CCI COLOGNE REGION

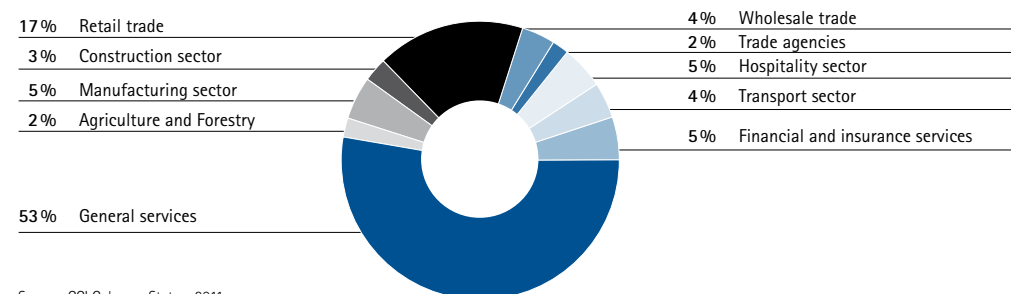
## The largest companies in the CCI Cologne region

Company	employees		
	in the CCI Cologne region	in Germany	worldwide
Ford-Werke GmbH	17,500	24,000	
Bayer Aktiengesellschaft	13,400	36,200	111,400
Stadtwerke Köln Konzern	11,111		
REWE Group	9,400	225,000	336,000
Deutsche Bahn AG (Cologne district)	7,153	192,838	295,296
AXA Konzern AG	5,406	11,478	214,044
RWE Power Aktiengesellschaft	5,200	15,400	
Sparkasse KölnBonn	4,332		
Currenta GmbH & Co, OHG	4,200	5,300	
GALERIA Kaufhof GmbH	4,046	17,478	24,423
Lanxess AG	4,000	7,600	15,500
Kliniken der Stadt Köln gGmbH	4,000		
Westdeutscher Rundfunk	3,758	4,432	4,512
DKV Deutsche Krankenversicherung AG (Ergo Versicherungsgruppe)	3,367	16,020	8,797
Kölnener Verkehrs-Betriebe AG	3,214		
Gothaer Konzern	3,186	5,262	747
RheinEnergie AG	3,170		
Klinikum Oberberg GmbH	3,125		
Deutsche Lufthansa AG	3,124	65,000	117,000
Kreissparkasse Köln	2,964	3,829	

Source: CCI Cologne, 2011. Cf. [www.ihk-koeln.de](http://www.ihk-koeln.de), doc. no. 33738

\*This overview does not claim to be complete. Although the contents thereof have been prepared with great care, we do not accept any responsibility for the correctness of the information provided.

## BRANCH STRUCTURE OF COMPANIES REGISTERED WITH THE CCI



Source: CCI Cologne. Status: 2011

## Companies registered in the commercial register (without dependent branches)

### Companies registered in the commercial register (without dependent branches)

Business sector	HS_ZN	HS total	Sole trader	OHG	KG	GmbH & Co, KG	UG (haftungsbeschränkt)	GmbH	AG	VaG	Other
Agriculture and forestry; fisheries	56	56	9	3	5	9	1	29	0	0	0
Industry and construction	4,359	4,262	297	49	69	730	149	2,939	51	1	74
Energy and water supply	180	177	4	3	4	66	7	72	7	0	17
Wholesale trade	4,109	3,977	329	61	60	423	119	2,958	35	0	124
Retail trade	4,085	3,960	1,248	161	99	335	225	1,938	14	0	65
Financial services	401	395	76	15	10	22	27	242	0	0	9
Banks	167	124	3	2	3	24	2	66	15	0	52
Financial services	211	209	28	4	6	20	9	127	12	0	5
Insurance companies	80	55	0	0	0	0	0	6	46	7	21
Insurance services	498	486	97	26	10	40	16	285	16	0	8
Transport, postal services and telecommunications	1,137	1,075	137	16	12	102	77	737	11	0	45
Other economic sector	21,675	21,185	953	171	315	2,442	1,225	15,494	401	0	674
Hospitality sector	1,021	1,006	90	16	20	99	95	670	3	0	28
<b>Total</b>	<b>37,979</b>	<b>36,967</b>	<b>3,271</b>	<b>527</b>	<b>613</b>	<b>4,312</b>	<b>1,952</b>	<b>25,563</b>	<b>611</b>	<b>8</b>	<b>1,122</b>

HS = Head office, ZN = Autonomous Branch office, OHG = General partnership, KG = Limited partnership, GmbH & Co KG = Limited partnership with limited liability company as general partner, KGaA = Company limited by shares, GmbH = Limited liability company, VaG = Mutual insurance company, AG = Public Limited Company, UG (haftungsbeschränkt) = Business Company (with limited liability)

### Small traders (companies without branches and not registered)

Total	Retail trade	General services	Wholesale trade and trade agency	Hospitality sector	Financial and insurance services	Transport, postal services and telecommunications	Industry and construction	Other
105,554	20,962	57,957	4,681	5,922	5,435	3,442	5,123	2,032

Source: CCI Cologne. Status: 31/12/2011.

## Company registrations and insolvencies

	2011	2010	Change in %
New business registrations	25,094	24,645	1.8
of which new registrations	21,115	20,486	3.1
Company deregistrations	21,184	19,843	6.8
Company insolvencies	1,579	1,459	8.2
Consumer insolvencies	3,452	3,339	3.4

Source: Information und Technik NRW (IT.NRW). Status: 2011.

## MANUFACTURING INDUSTRY IN THE CCI COLOGNE REGION

### Manufacturing industry\*

	Employees			Total turnover (in million euros)			
	2011	2010	Change in %	2011	2010	Change in %	Share in %
Administrative district							
Cologne	48,136	47,862	0.6	29,423	26,560	10.8	51.1
Leverkusen	12,997	13,049	-0.4	7,226	6,898	4.7	12.6
Oberberg District	27,582	27,081	1.9	6,556	5,759	13.8	11.4
Rhein-Erft District	20,180	20,412	-1.1	12,205	11,073	10.2	21.2
Rhein-Berg District	11,127	10,624	4.7	2,119	1,939	9.3	3.7
<b>CCI Cologne region</b>	<b>120,023</b>	<b>119,090</b>	<b>0.8</b>	<b>57,529</b>	<b>52,229</b>	<b>10.1</b>	<b>100.0</b>
NRW	1,109,896	1,088,718	1.9	334,188	300,871	11.1	

\* Companies with 50 and more employees, including the construction sector with 20 and more employees.  
Source: Information und Technik NRW (IT.NRW). Status: 2011.

### Selected industrial sectors

Business sector	Companies		Employees		Total sales (in million euros)			Share of sectors in total turnover in %
	2011	2010	2011	2010	2011	2010	Change in %	
Automotive	15	14	23,848	23,434	15,740	14,997	5.0	27.4
Chemicals industry	47	50	20,188	20,333	11,962	11,164	7.2	20.8
Mechanical engineering	65	62	14,909	14,231	4,522	3,470	30.3	7.9
Metal producing and processing industry	67	68	12,140	11,616	2,810	2,358	19.2	4.9
Food industry	38	38	6,334	6,441	2,298	2,355	-2.4	4.0
Electrical engineering	40	42	8,495	8,588	2,018	1,848	9.2	3.5
Rubber and Plastic goods	49	47	9,006	8,711	1,635	1,570	4.2	2.8
Construction industry	117	114	5,554	5,342	931	842	10.6	1.6
Paper industry	13	14	2,410	2,446	786	745	5.4	1.4
Stone and earth	13	13	2,813	2,829	677	670	1.1	1.2
Printing and Publishing	14	15	1,650	1,907	272	287	-5.1	0.5
Coal mining	4	4	2,534	2,595	n. a.	n. a.	-	-
Other manufacturing industry	63	63	10,142	10,617	13,878	11,923	16.4	24.1
<b>Manufacturing and construction sectors Total</b>	<b>545</b>	<b>544</b>	<b>120,023</b>	<b>119,090</b>	<b>57,529</b>	<b>52,229</b>	<b>10.1</b>	<b>100.0</b>

n. a. - no response

Source: Information und Technik NRW (IT.NRW). Status: 2011.

Export Sales**			
Administrative district	Export sales (in million euros)		Export quota
Cologne	16,390		56.8
Leverkusen	5,197		72.6
Oberberg District	2,761		42.6
Rhein-Erft District	3,555		29.6
Rhein-Berg District	920		44.3
<b>CCI Cologne region</b>	<b>28,823</b>		<b>50.9</b>
NRW	140,644		43.3

\* Excluding construction sector, companies with 50 and more employees in the manufacturing industry.  
Source: Information und Technik NRW (IT.NRW). Status: 2011.

## TRADE IN THE CCI COLOGNE REGION

Retail companies				
Selected sectors	Registered companies without branch offices		Small traders (not in commercial register*)	
	2011	2010	2011	2010
Food, beverages, tobacco	360	351	2,486	2,518
Medical, orthopaedic & cosmetic articles	672	675	899	878
Textiles, clothing, shoes, leather goods	396	382	2,218	2,192
Furniture, furnishings, house wares	331	337	1,002	983
Electric household appliances, radio and TV sets, musical instruments	225	223	989	1041
Metal products, paints, building, DIY materials	243	235	928	940
Books, newspapers, magazines, stationery, office supplies	94	102	485	520
Flower, plants, pet products	75	79	920	935
Precision engineered, photographic and optical products, computers, software	310	318	1,318	1,390
Clocks, jewellery	91	96	631	623
Toys	35	38	354	354
Bicycles and accessories, sports and camping articles	136	126	520	533
Mail order companies	41	31	457	327
Stalls and market suppliers	3	3	125	117
Warehouse retail trade, door-to-door sales, sales from delivery vehicles	11	10	142	113
Motor vehicles, parts and accessories, service stations	631	621	1,710	1,683
Other retail trade	431	430	5,778	5,950
<b>Total</b>	<b>4,085</b>	<b>4,057</b>	<b>20,962</b>	<b>21,097</b>

Source: CCI Cologne. Status: 31/12/2011.

Wholesale companies				
Selected sectors	Registered companies without branch offices		Small traders (not in commercial register)	
	2011	2010	2011	2010
Grain, animal feed and fertilisers, animals	57	52	58	62
Textile raw materials, semi-finished goods, skins etc.	12	12	5	6
Technical chemicals, raw drugs, rubber	130	130	40	36
Solid fuels, mineral oil products	53	54	15	16
Ores, steel, non-ferrous metals and similar	109	115	19	20
Timber, building materials, plumbing supplies	411	412	158	170
Scrap, residual materials	49	46	102	62
Food, beverages, tobacco	674	653	306	316
Textiles, clothing, shoes, leather goods	256	264	141	137
Metal products, furnishings	144	154	63	64
Precision eng. and optical products, jewellery and similar	77	79	50	49
Vehicles, machines, technical supplies	1,261	1,261	573	571
Pharmaceutical, cosmetic and similar products	241	250	83	89
Paper, printed materials, various kinds of materials	107	113	28	31
Other wholesale trade	528	523	341	355
<b>Total</b>	<b>4,109</b>	<b>4,118</b>	<b>1,982</b>	<b>1,984</b>

Source: CCI Cologne. Status: 31/12/2011.

## HEALTH SERVICES IN THE CCI COLOGNE REGION

Health Service				
Selected sectors	Registered companies with branch offices		Small traders (not in commercial register)	
	2011	2010	2011	2010
Manufacturer of pharmaceutical and cosmetic products	175	168	21	22
Trade agencies and wholesale trade	276	288	249	261
Pharmacies and specialist retail trade	702	707	915	897
Medical research and development	48	43	6	6
Health and safety consultants	92	86	100	98
Hospitals and surgeries	139	128	63	69
Other self-employed activities:				
Medical chiropody and nutrition consultants	159	145	824	851
Patient transport, ambulance services, Medical laboratories	109	116	16	14
Veterinary medicine	5	4	71	61
Care homes, day centres and nurseries	96	96	56	51
Other social services	172	163	1,025	909
Hairdressing and beauty salons	91	96	1,620	1,637
Saunas, solariums, fitness centres and similar	113	112	868	825
<b>Total</b>	<b>2,177</b>	<b>2,152</b>	<b>5,834</b>	<b>5,701</b>

Source: CCI Cologne. Status: 31/12/2010.



## TOURISM IN THE CCI COLOGNE REGION

### Overnight stays

	Hotel beds provided December 2011	Overnight stays 2011		Average occupancy of the beds provided in % December 2011
		total	by foreign visitors	
Administrative district				
Cologne	29,073	4,970,056	1,673,663	46.9
Leverkusen	1,453	222,477	67,068	42.1
Oberberg District	5,918	853,869	52,422	38.4
Rhein-Erft District	7,705	1,010,171	206,230	35.9
Rhein-Berg District	3,872	517,816	60,645	36.9
<b>CCI Cologne region</b>	<b>48,021</b>	<b>7,574,389</b>	<b>2,060,028</b>	

Source: Information und Technik NRW (IT.NRW). Status: 2011.

### Tourism and leisure sector

	Companies in commercial register in 2011 with branch offices				Small traders in 2011 (not commercially registered companies)				Total
	Cologne	Oberberg District	Rhein-Erft District	Rhein-Berg Dist./Leverkusen	Cologne	Oberberg District	Rhein-Erft District	Rhein-Berg Dist./Leverkusen	
<b>Hospitality sector</b>									
Hotels, guesthouses, boarding houses, Bed and Breakfast	191	21	26	36	107	60	78	62	581
Other accommodation/lodging places	11	3	1	1	91	26	29	34	196
Restaurants	320	15	75	54	198	62	99	81	904
Cafes, ice cream parlours, snack bars	62	6	16	19	924	141	335	270	1,773
Public houses	141	5	16	11	1,353	270	443	451	2,690
Bars, amusement centres, nightclubs, dance halls	36	3	3	3	41	6	12	12	116
Kiosks	2	0	0	0	106	1	8	54	171
Canteens and caterers	51	8	11	10	323	62	110	73	648
<b>Travel sector</b>									
Travel agents	185	16	38	30	260	46	94	90	759
Tour operators	78	6	8	14	151	19	34	31	341
Coach operators	12	4	14	6	11	8	10	9	74
<b>Leisure sector</b>									
Operating cultural and entertainment facilities	119	7	20	16	785	119	229	180	1,475
Operation of sports facilities	42	12	25	21	26	27	44	27	224
Saunas, solariums, fitness centres	71	10	23	16	452	122	181	194	1,069
Sports, gambling and lottery	163	31	46	56	908	89	254	249	1,796
MICE - Meetings Incentives Conventions Events	340	19	76	57	2,089	192	434	420	3,627
<b>Total</b>	<b>1,824</b>	<b>166</b>	<b>398</b>	<b>350</b>	<b>7,825</b>	<b>1,250</b>	<b>2,394</b>	<b>2,237</b>	<b>16,444</b>

Source: CCI Cologne. Status: 31/12/2011.

### Trade fairs and exhibitions

Exhibitors/Visitors	Total	Foreign	Domestic	Share of foreign companies in %
Exhibitors	33,600	21,050	12,550	62.6
Other companies represented	750	400	350	53.3
Visitors	1,718,100	588,450	1,129,650	34.3

Exhibition area 284,000 sq. mtrs. Source: Koelnmesse GmbH. Status: 2010. Provisional figures.

## INFORMATION AND COMMUNICATION TECHNOLOGY (ICT) IN THE CCI COLOGNE REGION

### ICT-companies

Economic sectors	2011	2010
Manufacturer	35	33
Telecommunications installation	93	102
Trade	3,134	3,259
Telecommunications services	154	170
Data processing	7,609	7,560
IT training	151	150
<b>Total</b>	<b>11,176</b>	<b>11,274</b>
of which telecommunication companies	527	557

Source: CCI Cologne. Status: 31/12/2011.

## BUILDING AND LIVING IN THE CCI COLOGNE REGION

### Planning permissions

Administrative district	Non-residential buildings	Residential buildings with	
		1 and 2 flats	3 flats or more*
Cologne	15	772	203
Leverkusen	6	175	5
Oberberg District	63	211	15
Rhein-Erft District	50	507	47
Rhein-Berg District	36	311	22
<b>CCI Cologne region</b>	<b>170</b>	<b>1,976</b>	<b>292</b>
NRW	3,888	17,545	1,835

\*Without residential accommodation. Source: Information und Technik NRW (IT.NRW). Status: 2011.

Commercial rental prices			
	Shop premises in prime location Euro/m <sup>2</sup>	Office premises in good location Euro/m <sup>2</sup>	Warehouse/Production area Euro/m <sup>2</sup>
<b>Cologne</b>			
Borough 1 City Centre	50.00 - 250.00	11.00 - 18.00	2.00 - 5.00
Borough 2 Rodenkirchen	12.00 - 35.00	6.00 - 11.00	2.00 - 5.00
Borough 3 Lindenthal	12.00 - 35.00	6.00 - 13.00	2.00 - 5.00
Borough 4 Ehrenfeld	10.00 - 30.00	6.00 - 11.00	2.00 - 5.00
Borough 5 Nippes	10.00 - 30.00	6.00 - 11.00	2.00 - 5.00
Borough 6 Chorweiler	10.00 - 20.00	6.00 - 11.00	2.00 - 5.00
Borough 7 Porz	10.00 - 30.00	6.00 - 11.00	2.00 - 5.00
Borough 8 Kalk	10.00 - 25.00	6.00 - 11.00	2.00 - 5.00
Borough 9 Mülheim	12.00 - 25.00	6.00 - 10.00	2.00 - 5.00
Leverkusen	10.00 - 25.00	5.00 - 10.00	2.00 - 4.50
<b>Oberberg District</b>			
Bergneustadt (town)	4.00 - 10.00	5.00 - 8.00	2.00 - 3.50
Engelskirchen (village)	4.00 - 10.00	5.00 - 8.00	2.00 - 3.50
Gummersbach (town)	6.00 - 30.00	5.00 - 8.00	2.00 - 4.00
Hückeswagen (town)	4.00 - 10.00	5.00 - 8.00	2.00 - 3.50
Marienheide (village)	4.00 - 10.00	5.00 - 8.00	2.00 - 3.50
Morsbach (village)	4.00 - 8.00	5.00 - 8.00	2.00 - 3.50
Nümbrecht (village)	4.00 - 10.00	5.00 - 8.00	2.00 - 4.00
Radevormwald (village)	4.00 - 10.00	5.00 - 8.00	2.00 - 4.00
Lindlar (village)	4.00 - 10.00	5.00 - 8.00	2.00 - 3.00
Waldbröl (town)	4.00 - 10.00	5.00 - 8.00	2.00 - 3.00
Wipperfürth (town)	4.00 - 12.00	5.00 - 8.00	2.00 - 3.00
Reichshof (village)	4.00 - 9.00	5.00 - 8.00	2.00 - 3.00
Wiehl (town)	4.00 - 12.00	5.00 - 8.00	2.00 - 3.00
<b>Rhein-Erft District</b>			
Bedburg (town)	5.00 - 15.00	4.00 - 8.00	1.50 - 4.00
Bergheim (town)	5.00 - 20.00	5.00 - 10.00	2.50 - 4.00
Brühl (town)	20.00 - 36.00	5.00 - 10.00	2.50 - 5.00
Elsdorf (village)	5.00 - 10.00	4.00 - 8.00	1.50 - 4.00
Erfstadt (town)	5.00 - 15.00	5.00 - 9.00	2.50 - 4.50
Frechen (town)	10.00 - 20.00	6.00 - 10.00	2.50 - 4.50
Hürth (town)	5.00 - 16.00	5.00 - 11.00	2.50 - 4.50
Kerpen (town)	6.00 - 16.00	5.00 - 10.00	2.50 - 4.50
Pulheim (town)	5.00 - 20.00	5.00 - 11.00	2.50 - 5.00
Wesseling (town)	5.00 - 20.00	5.00 - 9.00	2.50 - 4.50
<b>Rhein-Berg District</b>			
Bergisch Gladbach (town)	15.00 - 35.00	5.00 - 11.50	2.50 - 5.00
Burscheid (town)	6.00 - 10.00	5.00 - 8.00	2.00 - 4.00
Kürten (village)	6.00 - 10.00	5.00 - 8.00	2.00 - 4.00
Leichlingen (town)	6.00 - 15.00	5.00 - 8.00	2.00 - 4.00
Overath (town)	6.00 - 15.00	5.00 - 8.00	2.00 - 4.00
Rösrath (town)	6.00 - 15.00	5.00 - 8.00	2.00 - 4.00
Wermelskirchen (town)	6.00 - 15.00	5.00 - 8.00	2.00 - 4.00
Odenthal (village)	6.00 - 12.00	5.00 - 8.00	2.50 - 3.50

Source: Rheinische Immobilienbörse e.V. Status: April 2012.

## PUBLIC FINANCE IN THE CCI COLOGNE REGION

Public finances		
Administrative district	Deposits (in 1,000 euros)	Payments (in 1,000 euros)
Cologne	3,345,594	3,422,971
Leverkusen	446,167	442,961
Oberberg District	854,746	836,150
Rhein-Erft District	1,438,204	1,394,232
Rhein-Berg District	786,120	748,686
<b>CCI Cologne region</b>	<b>6,870,830</b>	<b>6,845,001</b>

Source: Information und Technik NRW (IT.NRW). Status: 2010.

Business rates				
Local Authority	Business rates		Tax on land and buildings	
	2012	2011	2012	2011
<b>Cologne</b>	475	475	515	500
<b>Leverkusen</b>	460	460	590	500
<b>Oberberg District</b>				
Bergneustadt	430	430	413	410
Engelskirchen	450	450	413	411
Gummersbach	440	440	413	401
Hückeswagen	450	440	435	395
Lindlar	450	450	430	410
Marienheide	440	440	413	400
Morsbach	450	450	413	410
Nümbrecht	450	450	420	395
Radevormwald	440	430	430	395
Reichshof	445	445	400	400
Waldbröl	440	430	413	390
Wiehl	420	420	413	386
Wipperfürth	450	450	413	410
<b>Rhein-Erft District</b>				
Bedburg	475	460	475	435
Bergheim	470	460	450	440
Brühl	430	430	450	450
Elsdorf	480	450	450	413
Erfstadt	440	440	440	440
Frechen	450	420	391	391
Hürth	440	440	420	420
Kerpen	480	460	480	450
Pulheim	430	430	420	420
Wesseling	460	440	450	420
<b>Rhein-Berg District</b>				
Bergisch Gladbach	460	460	490	487
Burscheid	430	430	420	420
Kürten	460	440	480	450
Leichlingen	430	430	430	430
Odenthal	424	424	420	420
Overath	440	440	410	410
Rösrath	445	445	420	420
Wermelskirchen	430	407	488	416

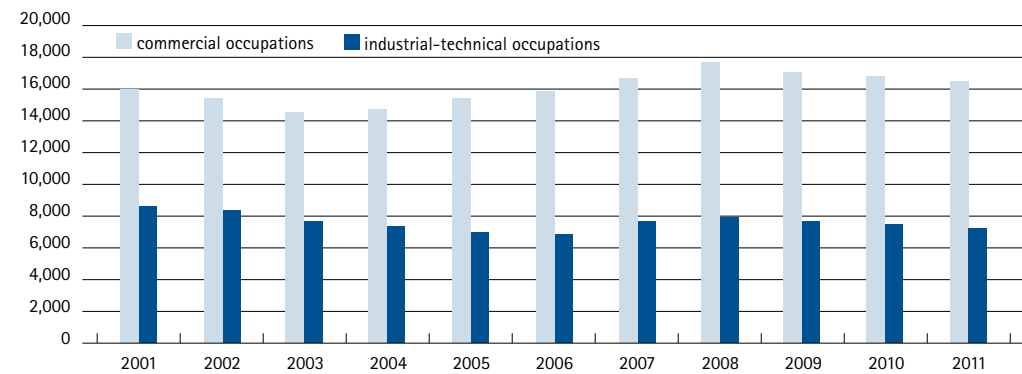
Source: Local authority budgets. Status: March 2012.

## VOCATIONAL TRAINING IN THE CCI COLOGNE REGION

Distribution of newly registered apprenticeships in the key occupations				
Occupations	2011	2010	Difference	Changes in %
Industrial Management Assistant	533	487	46	9
Salesperson	774	753	21	3
Retail Management Assistant	877	864	13	2
Management Assistant for Wholesale and Foreign Trade	454	420	34	8
Banking Professional	391	352	39	11
Management Assistant for Insurance and Finance	350	381	-31	-8
Catering Expert	53	78	-25	-32
Hotel Industry Expert	320	347	-27	-8
Chef	276	335	-59	-18
Other hospitality trade	184	191	-7	-4
Management Assistant for Tourism	83	71	12	17
Management Assistant for Freight Forwarding and Logistic Services	152	126	26	21
Warehouse Logistics Expert	268	258	10	4
Skilled Warehouse Operator	179	182	-3	-2
Office Manager	607	584	23	4
Management Assistant for Office Communication	353	359	-6	-2
Management Assistant for Audiovisual Media	39	40	-1	-3
Real Estate Management Assistant	131	120	11	9
Management Assistant for Information and Telecommunication Systems	47	43	4	9
IT Management Assistant	38	31	7	23
Event Management Assistant	115	102	13	13
Other commercial occupations	882	861	21	2
<b>Commercial total</b>	<b>7,106</b>	<b>6,985</b>	<b>121</b>	<b>2</b>
Industrial Mechanic	278	256	22	9
Machine and Plant Operator	63	39	24	62
Technical Draftsperson	28	35	-7	-20
Tool Engineer	64	57	7	12
Mechatronics Technician	118	88	30	34
Event Technician	61	58	3	5
Automotive Mechatronics Technician	31	23	8	35
Electronics Technician	271	248	23	9
Electronics Technician for Information and Telecommunications Systems	52	76	-24	-32
Computer Science Expert	358	297	61	21
Draftsman	30	38	-8	-21
Construction industry	84	103	-19	-18
Chemical Laboratory Technician	62	45	17	38
Chemical Production Technician	153	134	19	14
Digital and Print Media Designer	105	126	-21	-17
Audiovisual Media Designer	81	83	-2	-2
Other industrial occupations	672	588	84	14
<b>Industrial/technical total</b>	<b>2,511</b>	<b>2,294</b>	<b>217</b>	<b>9</b>
<b>Commercial and industrial/technical total</b>	<b>9,617</b>	<b>9,279</b>	<b>338</b>	<b>4</b>

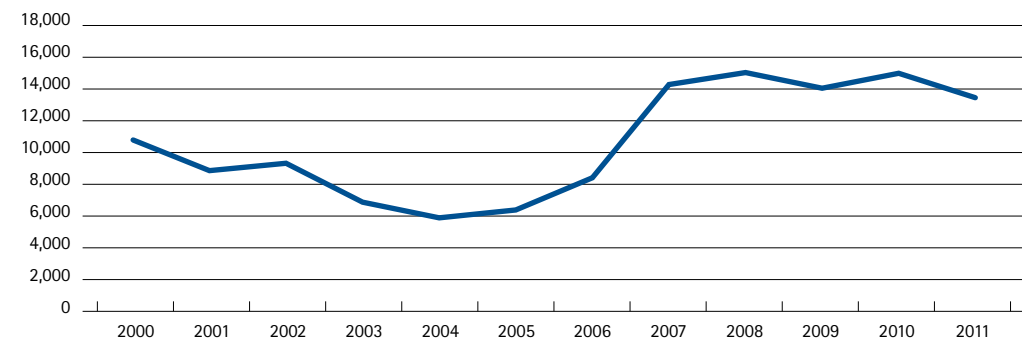
Source: CCI Cologne. Status: 31/12/2011.

## REGISTERED APPRENTICESHIPS FROM 2000 TO 2011



Source: CCI Cologne. Status: 31/12/2011, refer to [www.ihk-koeln.de](http://www.ihk-koeln.de), section: Aus- und Weiterbildung/Statistik.

## CAREERS ADVICE (INCL. EDUCATION GRANTS AND CAREERS CHECK)



Source: CCI Cologne. Status: 31/12/2011.

Training and development		
	2011	2010
Apprenticeships		
total in 168 occupations requiring formal training	24,178	24,409
commercial	16,894	17,056
industrial-technical	7,284	7,353
<b>Number of people taking exams</b>		
Final examinations in 142 occupations requiring formal training	9,566	9,565
commercial	7,008	7,096
industrial-technical	2,558	2,469
Intermediate examinations	6,487	6,857
commercial	5,173	5,416
industriell-technisch	1,314	1,441
Exams for advanced training in 32 commercial fields	1,606	1,780
Master professional of business management (CCI)	145	24
Master professional of insurance and finance (CCI)	122	153
Specialist for foreign language correspondence (CCI)	190	223
Advanced training exams in 25 industrial-technical fields	927	703
Industrial foreman and foreman in specialist field	518	457
Examinations with regard to instructor qualifications regulations	2,154	1,794
Examinations on specialist knowledge in road haulage and transport of passengers	324	376
Examinations in specialist knowledge in the security sector (34 a GewO)	977	973
Insurance broker	701	802
<b>Total number of examinations</b>	<b>22,327</b>	<b>23,594</b>
Companies actively training apprentices	5,648	5,802
Active instructors	7,614	7,717
<b>Examination boards</b>		
Training	344	491
Further training	98	156
<b>Members of examination boards</b>		
Training	3,752	5,434
Further education	1,521	1,910
<b>Arbitration</b>	<b>124</b>	<b>127</b>
<b>Training adviser</b>	<b>9</b>	<b>10</b>
Company visits	2,101	2,315
<b>Instruction</b>		
Instruction in the restaurant sector in accordance with clause 4 paragraph 1 no.	649	778
Instruction in the security sector (34 a GewO)	500	492
<b>Advice on further training</b>	<b>13,812</b>	<b>15,420</b>
Person-related	10,776	12,312
Company-related	3,036	3,108
<b>Courses and seminars</b>		
Number	352	329
Participants	6,538	5,819

Source: CCI Cologne. Status: 31/12/2011.

## CCI COLOGNE – YOUR SUPPLIER OF FACTS AND FIGURES

The Cologne Chamber of Commerce and Industry offers you an extensive range of data on the economic region of Cologne as well as on the cities of Cologne and Leverkusen and for the districts of Oberberg, Rhein-Erft and Rhein-Berg. More detailed publications can be found on the Internet.

We would be pleased to carry out a search for you. A contact form for your enquiries can be found here: [www.ihk-koeln.de/Standortpolitik/Statistiken](http://www.ihk-koeln.de/Standortpolitik/Statistiken), doc. no. 14458

### YOUR CONTACTS:



**Dr. Matthias Mainz**  
Head of Economics and Statistics  
phone +49 221 1640-506  
fax +49 221 1640-509  
[matthias.mainz@koeln.ihk.de](mailto:matthias.mainz@koeln.ihk.de)



**Doris Füchtener**  
phone +49 221 1640-504  
fax +49 221 1640-509  
[doris.fuechtener@koeln.ihk.de](mailto:doris.fuechtener@koeln.ihk.de)

### PUBLISHER

Cologne Chamber of Commerce and Industry  
Unter Sachsenhausen 10-26  
D-50667 Cologne  
phone +49 221 1640-163  
[www.ihk-koeln.de](http://www.ihk-koeln.de)

### RESPONSIBLE

Dr. Arnd Klein-Zirbes  
[arnd.klein-zirbes@koeln.ihk.de](mailto:arnd.klein-zirbes@koeln.ihk.de)

### EDITORS

Ilona Polom  
[ilona.polom@koeln.ihk.de](mailto:ilona.polom@koeln.ihk.de)

### LAYOUT/PRODUCTION

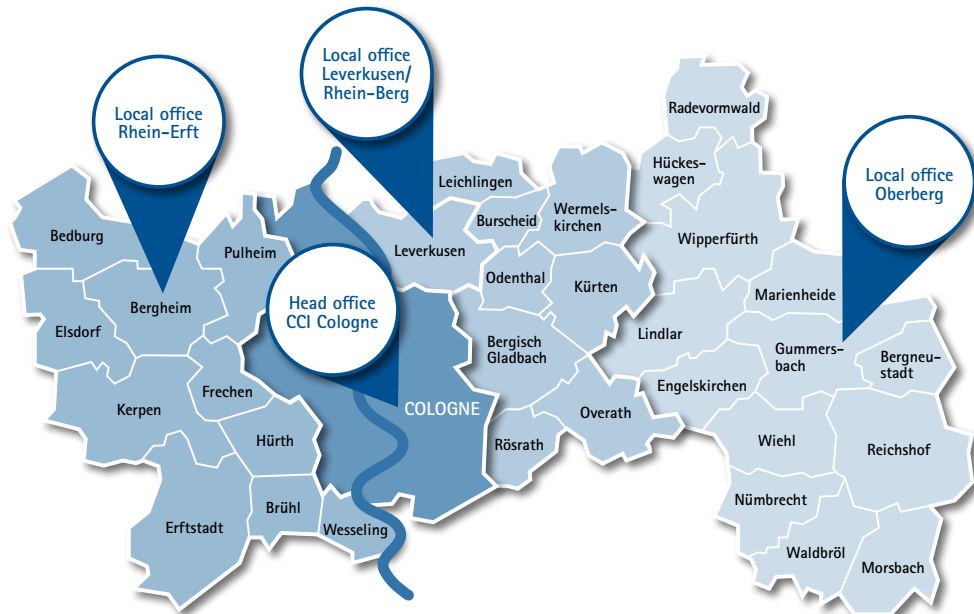
Konzeption + Design, Cologne  
Quass von Deyen /  
Voss / Schneider GbR  
[www.kdkoeln.de](http://www.kdkoeln.de)

### TITLE PHOTO

Peter Obenaus

## THE REGION OF THE COLOGNE CHAMBER OF COMMERCE AND INDUSTRY

Cologne
  Leverkusen
  Rhein-Erft District
  Rhein-Berg District
  Oberberg District



### COLOGNE

**Inhabitants:** 1,010,269  
**Area:** 405.17 sq.km  
**GDP:** 62,433 euros  
 per employed person  
**Purchasing power:** 22.220 million euros

### LEVERKUSEN

**Inhabitants:** 160,901  
**Area:** 78.87 sq.km  
**GDP:** 69,125 euros  
 per employed person  
**Purchasing power:** 3.434 million euros

### OBERBERG DISTRICT

**Inhabitants:** 280,326  
**Area:** 918.56 sq.km  
**GDP:** 55,750 euros  
 per employed person  
**Purchasing power:** 5.470 million euros

### RHEIN-ERFT DISTRICT

**Inhabitants:** 464,836  
**Area:** 704.6 sq.km  
**GDP:** 66,432 euros  
 per employed person  
**Purchasing power:** 10.114 million euros

### RHEIN-BERG DISTRICT

**Inhabitants:** 276,555  
**Area:** 437.53 sq.km  
**GDP:** 51,812 euros  
 per employed person  
**Purchasing power:** 6.702 million euros

## ADDRESSES

### COLOGNE CHAMBER OF COMMERCE AND INDUSTRY

Unter Sachsenhausen 10-26 | 50667 Cologne  
 phone +49 221 1640-0 | fax +49 221 1640-129  
 service@koeln.ihk.de  
 Map and directions: [www.ihk-koeln.de](http://www.ihk-koeln.de), doc. no. 1824

### LOCAL OFFICE LEVERKUSEN/RHEIN-BERG

An der Schusterinsel 2 | 51379 Leverkusen  
 phone +49 2171 4908-0 | fax +49 2171 4908-909  
 zweigstelle-leverkusen@koeln.ihk.de  
 Map and directions: [www.ihk-koeln.de](http://www.ihk-koeln.de), doc. no. 1827

### LOCAL OFFICE OBERBERG

Talstraße 11 | 51643 Gummersbach  
 phone +49 2261 8101-0 | fax +49 2261 8101-969  
 zweigstelle-oberberg@koeln.ihk.de  
 Map and directions: [www.ihk-koeln.de](http://www.ihk-koeln.de), doc. no. 1828

### LOCAL OFFICE RHEIN-ERFT

Bahnstraße 1 | 50126 Bergheim  
 phone +49 2271 8376-0 | fax +49 2271 8376-199  
 zweigstelle-rhein-erft@koeln.ihk.de  
 Map and directions: [www.ihk-koeln.de](http://www.ihk-koeln.de), doc. no. 1829